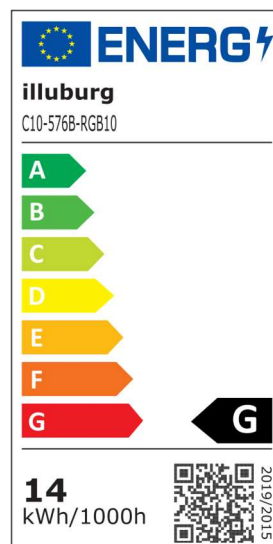
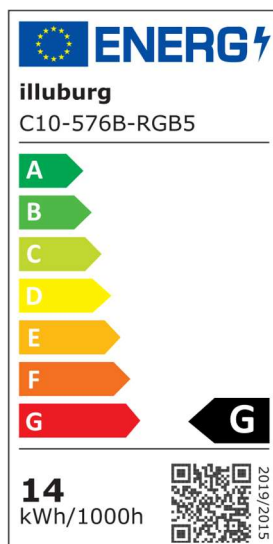
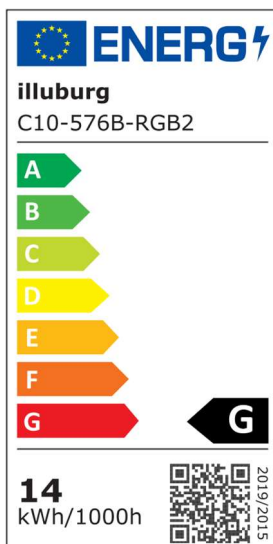


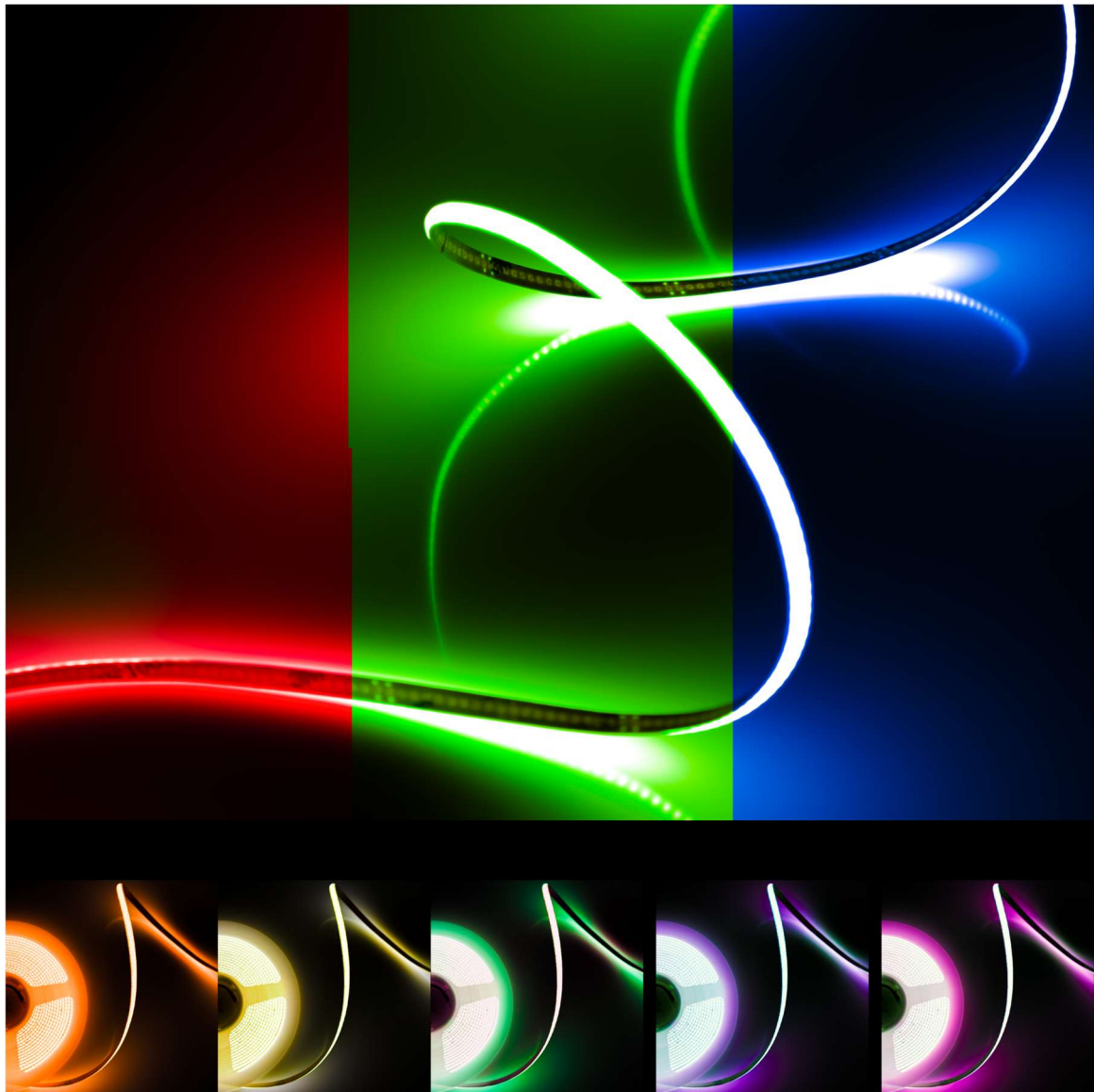
Datasheet & Operating instructions

Model: C10-576B-RGB

Flexible COB LED Strip 2.5 m, 5 m, 10 m Roll
576 LEDs/m, 30 lm/W, 14 W/m, 24 Vdc, RGB



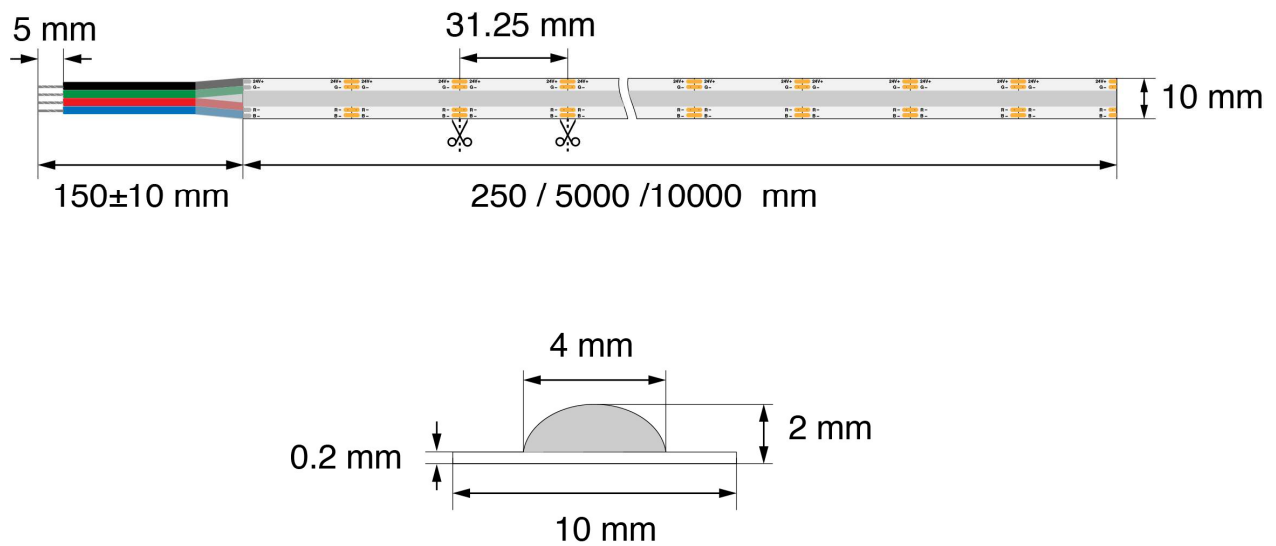
Dimming Effect



Technical Data

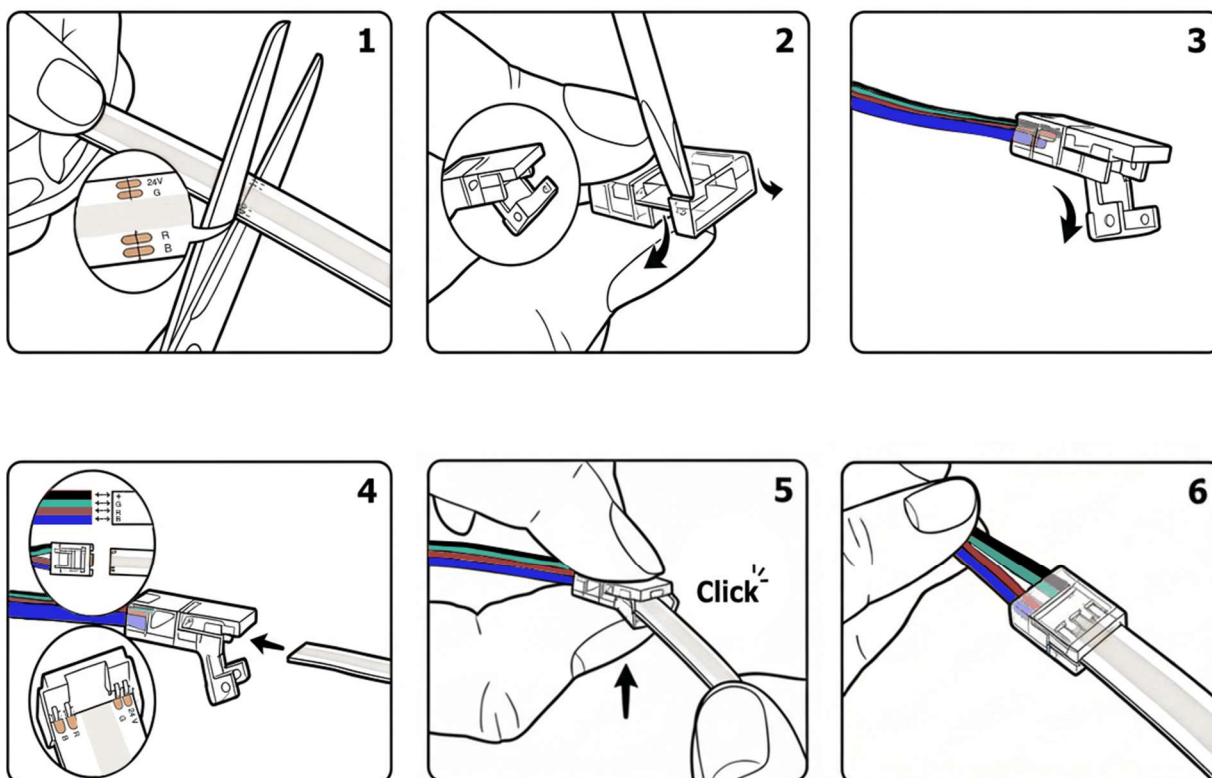
Model	C10-576B-RGB2 C10-576B-RGB5 C10-576B-RGB10	
LED type	COB	
Operating voltage	24 Vdc	
LED quantity	576 LEDs/m	C10-576B-RGB2: 1,440 LEDs C10-576B-RGB5: 2,880 LEDs C10-576B-RGB10: 5,760 LEDs
Power	14 W/m	Red: 5.7 W/m Green: 2.8 W/m Blue: 5.5 W/m
Efficiency	30 lm/W	Red: 20 lm/W Green: 9 lm/W Blue: 12 lm/W
Light flux	420 lm/m	Red: 114 lm/m Green: 260 lm/m Blue: 66 lm/m
CRI	≥ 90 Ra	
Efficiency Class	G	
Length	C10-576B-RGB2: 2.5 m C10-576B-RGB5: 5 m C10-576B-RGB10: 10 m	
Width	10 mm	
Hight	2 mm	
Life time	50,000 h	
Working environment	-20 °C ... +45 °C	
Storage environment	-30 °C ... +80 °C	
Protection type	IP20	
CE / RoHS	yes	

Dimension



The LED strips can be easily separated or shortened at the intersection using the cutter. There is double-sided heat-conducting adhesive tape on the back of the LED strips, which makes installation quick and easy.

Connection Instructions



The original LED strip has a cable connection on one side. After shortening the LED strips, a new connection can be made through a connector provided for this purpose.

Important notice

Download the safety instructions at www.illuburg.de/infocenter, read them carefully and observe the listed instructions and information for proper use.

Disclaimer of liability

Subject to changes and errors excepted. Make sure you are using the latest version.

Manufacturer Information

If you have any further questions, please contact our technical support.

HuaTec GmbH
Droopweg 31
20537, Hamburg, Germany

Telefon: +49 40 236448800
E-Mail: info@illuburg.de
Website: www.illuburg.de

