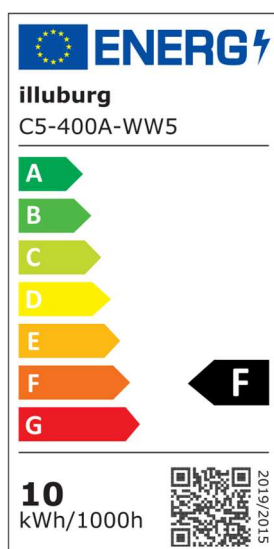
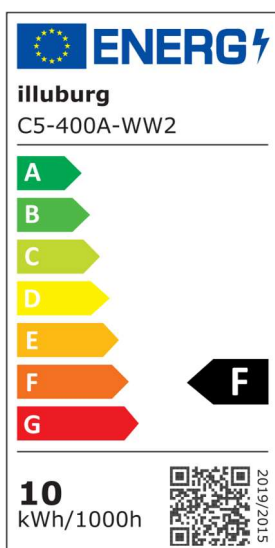


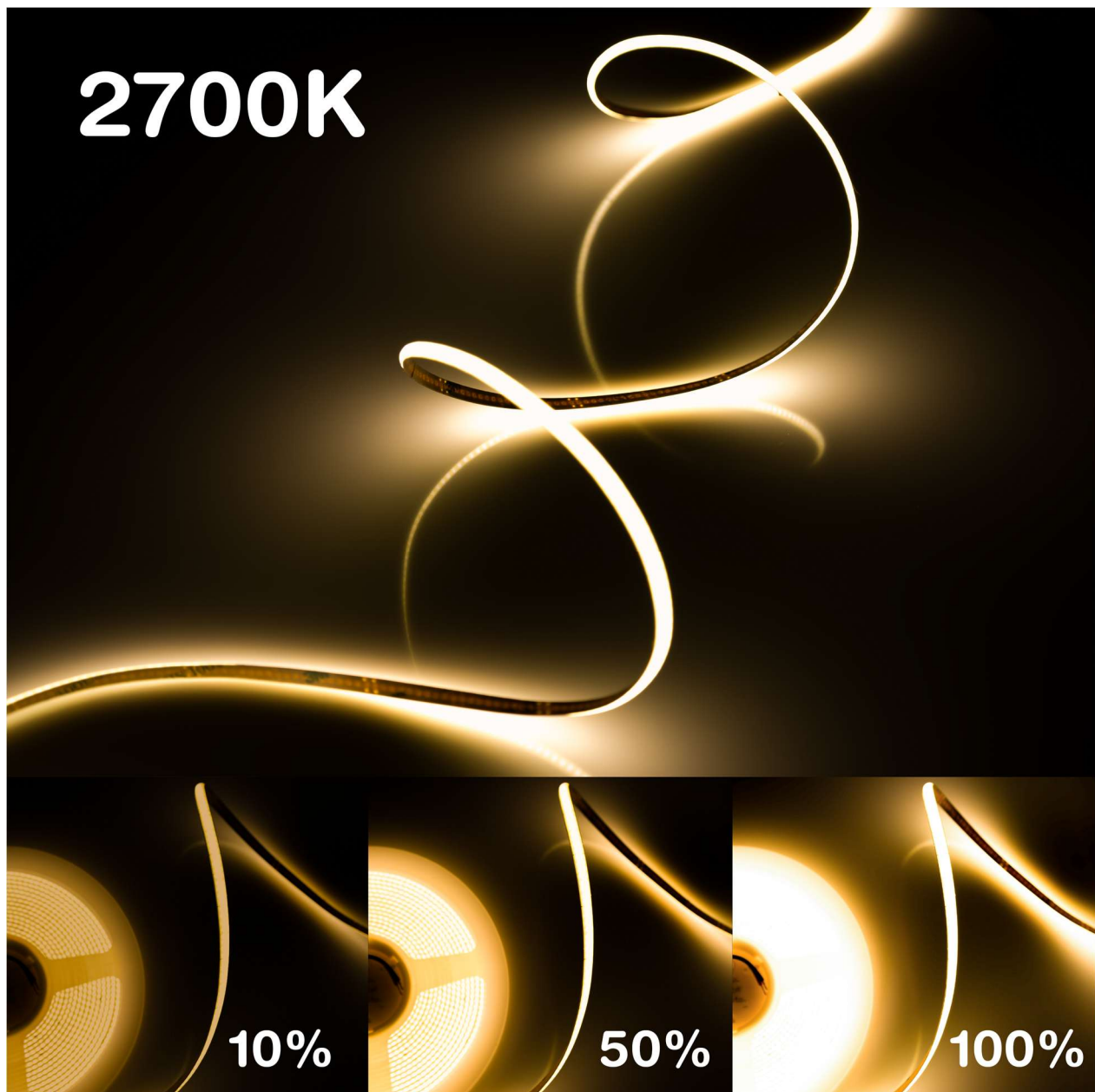
Datasheet & Operating instructions

Model: C5-400A-WW

Flexible COB LED Strip in 2.5 m, 5 m configuration
400 LEDs/m, 85 lm/W, 10 W/m, 12 Vdc, 2700K



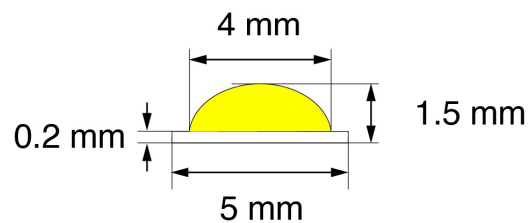
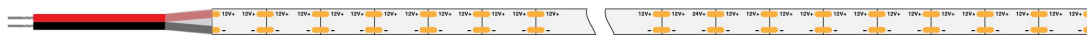
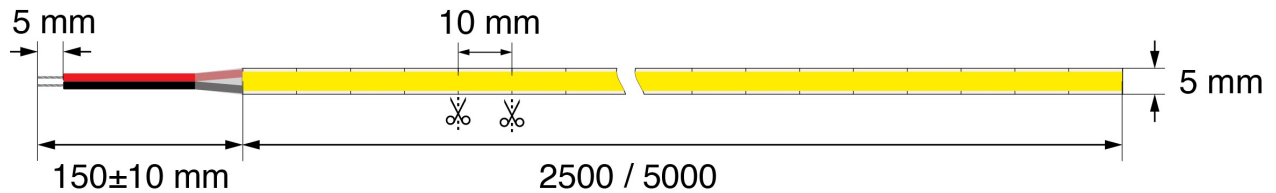
Dimming Effect



Technical Data

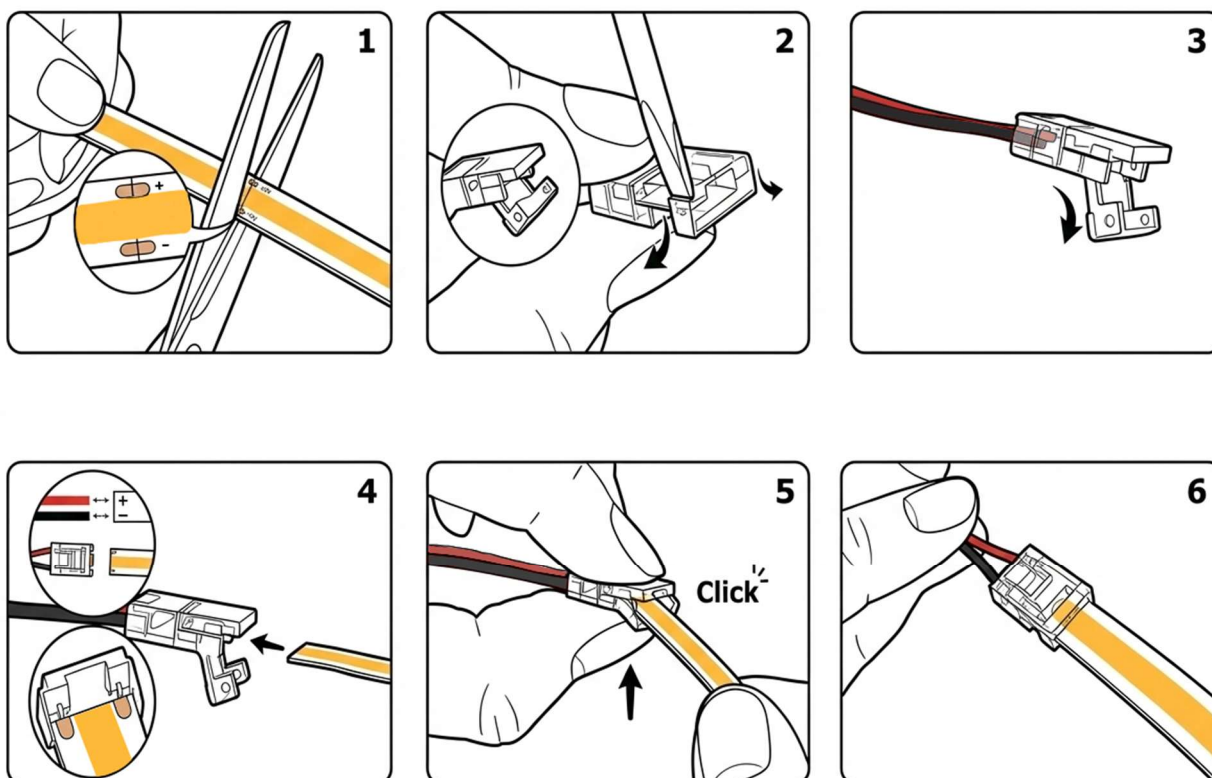
Model	C5-400A-WW2 C5-400A-WW5	
LED type	COB	
Operating voltage	12 Vdc	
LED quantity	400 LEDs/m	C5-400A-WW2: 1,000 LEDs C5-400A-WW5: 2,000 LEDs
Power	10 W/m	
Efficiency	85 lm/W	
Light flux	850 lm/m	
CRI	≥ 90 Ra	
Efficiency Class	F	
Color temperature	2700K	
Length	C5-400A-WW2: 2,500 mm C5-400A-WW5: 5,000 mm	
Width	5 mm	
Hight	1.5 mm	
Life time	50,000 h	
Working environment	-20 °C ... +45 °C	
Storage environment	-30 °C ... +80 °C	
Protection type	IP20	
CE / RoHS	yes	

Dimension



The LED strips can be easily separated or shortened at the intersection using the cutter. There is double-sided heat-conducting adhesive tape on the back of the LED strips, which makes installation quick and easy.

Connection Instructions



The original LED strip has a cable connection on one side. After shortening the LED strips, a new connection can be made through a connector provided for this purpose.



Important notice

Download the safety instructions at www.illuburg.de/infocenter, read them carefully and observe the listed instructions and information for proper use.

Disclaimer of liability

Subject to changes and errors excepted. Make sure you are using the latest version.

Manufacturer Information

If you have any further questions, please contact our technical support.

HuaTec GmbH
Droopweg 31
20537, Hamburg, Germany

Telefon: +49 40 236448800
E-Mail: info@illuburg.de
Website: www.illuburg.de

