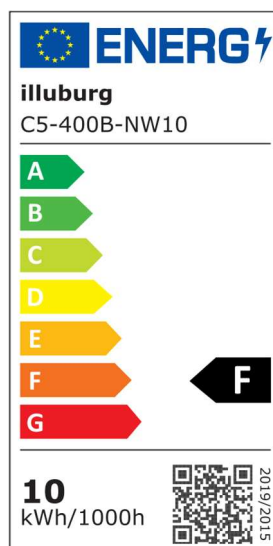
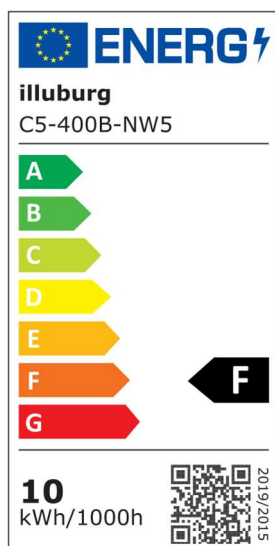
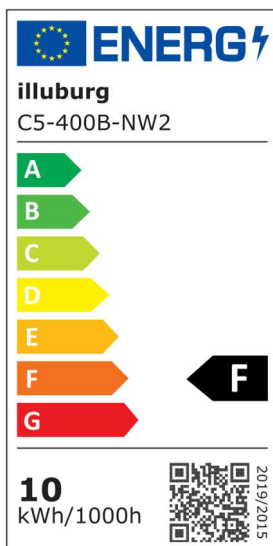


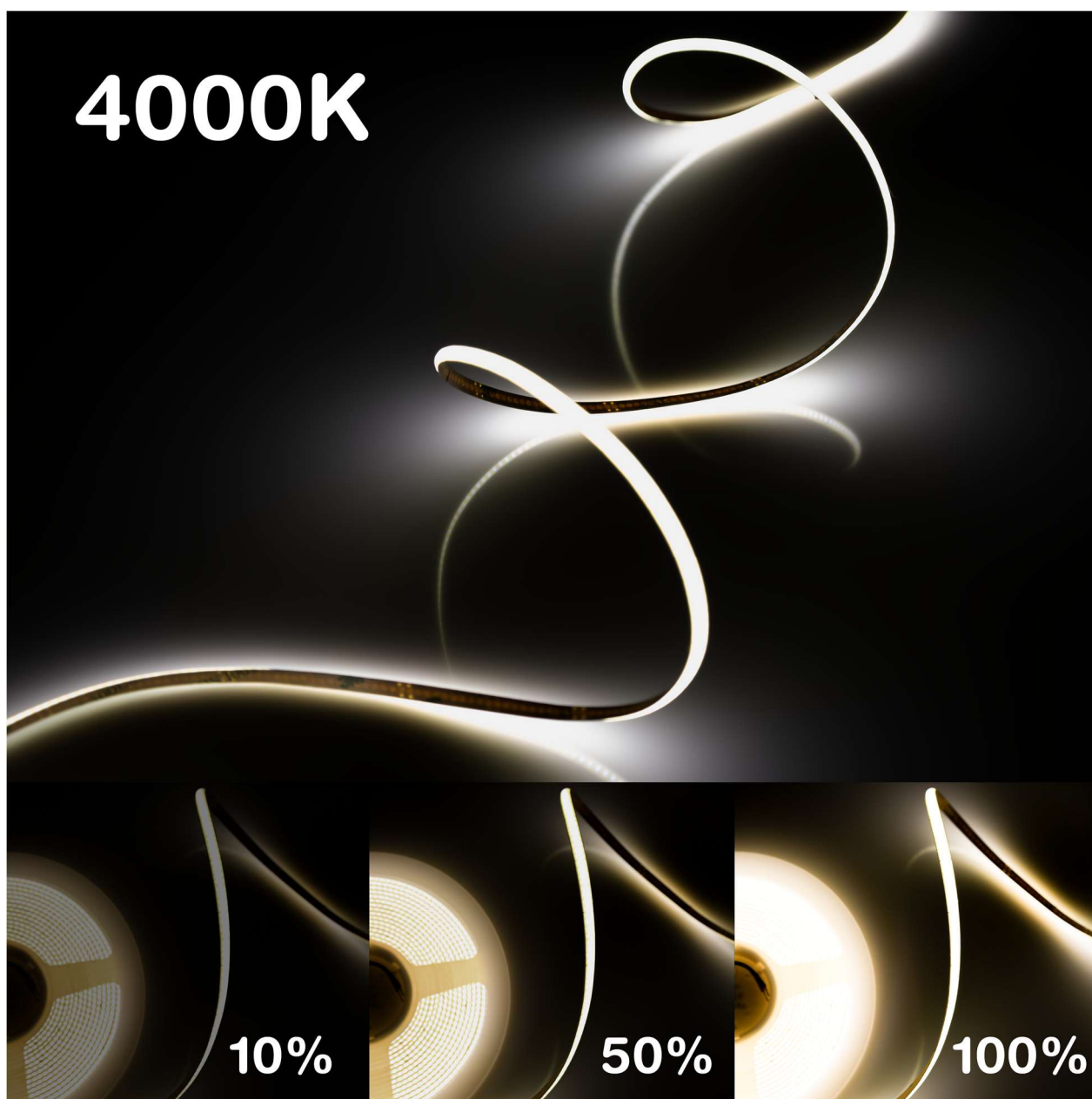
Datasheet & Operating instructions

Model: C5-400B-NW

Flexible COB LED Strip 2.5 m, 5 m, 10 m Roll
400 LEDs/m, 99 lm/W, 10 W/m, 24 Vdc, 4000 K



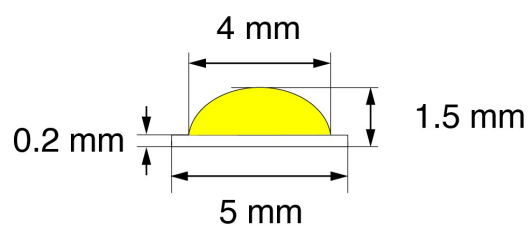
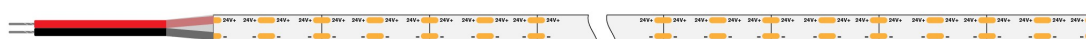
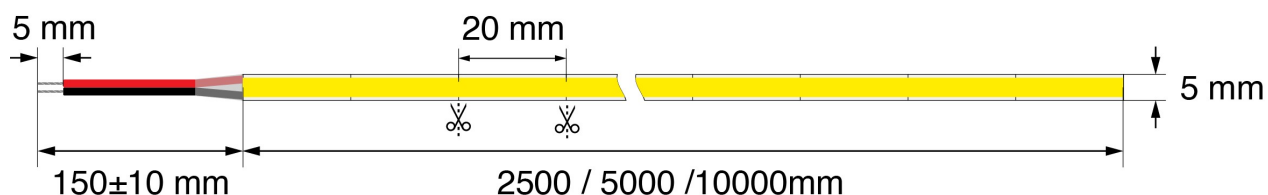
Dimming Effect



Technical Data

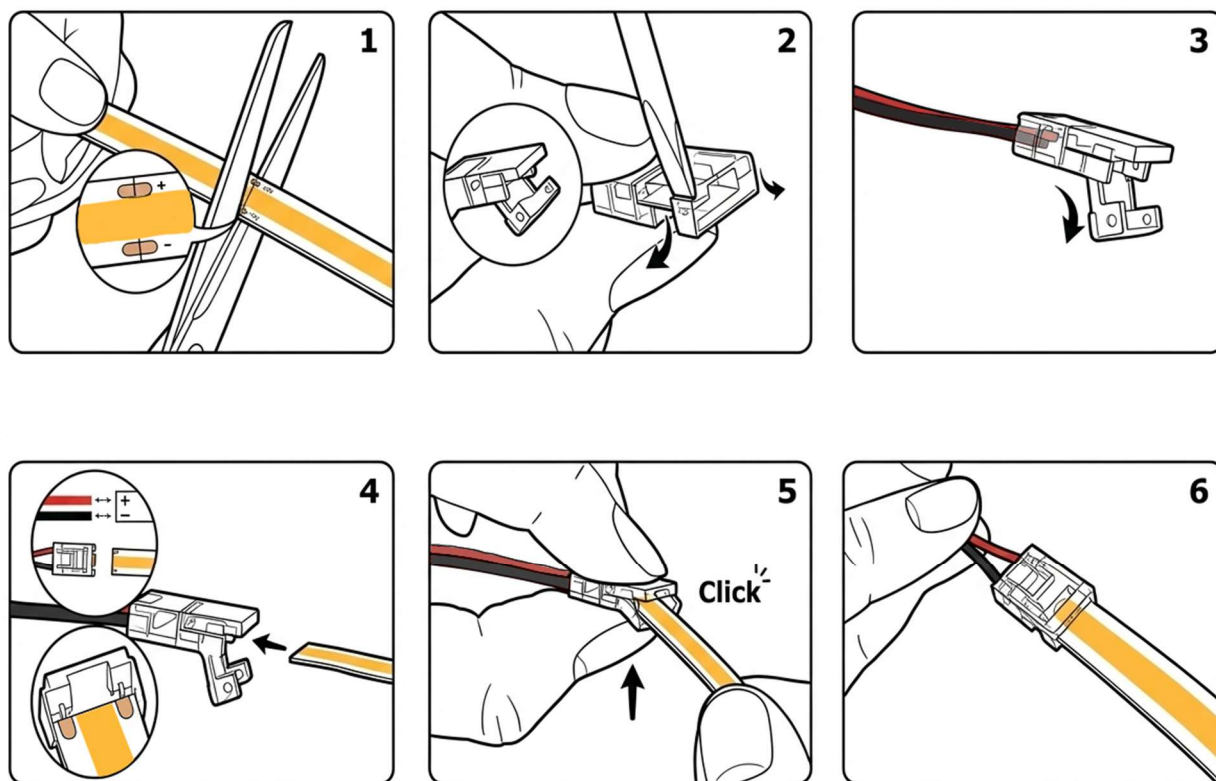
Model	C5-400B-NW2 C5-400B-NW5 C5-400B-NW10	
LED type	COB	
Operating voltage	24 Vdc	
LED quantity	400 LEDs/m	C5-400B-NW2: 1,000 LEDs C5-400B-NW5: 2,000 LEDs C5-400B-NW10: 4,000 LEDs
Power	10 W/m	
Efficiency	99 lm/W	
Light flux	990 lm/m	
Efficiency Class	F	
CRI	≥ 90 Ra	
Color temperature	4000 K	
Length	C5-400B-NW2: 2.5 m C5-400B-NW5: 5 m C5-400B-NW10: 10 m	
Width	5 mm	
Hight	1.5 mm	
Life time	50,000 h	
Working environment	-20 °C ... +45 °C	
Storage environment	-30 °C ... +80 °C	
Protection type	IP20	
CE / RoHS	yes	

Dimension



The LED strips can be easily separated or shortened at the intersection using the cutter. There is double-sided heat-conducting adhesive tape on the back of the LED strips, which makes installation quick and easy.

Connection Instructions



The original LED strip has a cable connection on one side. After shortening the LED strips, a new connection can be made through a connector provided for this purpose.



Important notice

Download the safety instructions at www.illuburg.de/infocenter, read them carefully and observe the listed instructions and information for proper use.

Disclaimer of liability

Subject to changes and errors excepted. Make sure you are using the latest version.

Manufacturer Information

If you have any further questions, please contact our technical support.

HuaTec GmbH
Droopweg 31
20537, Hamburg, Germany

Telefon: +49 40 236448800
E-Mail: info@illuburg.de
Website: www.illuburg.de

