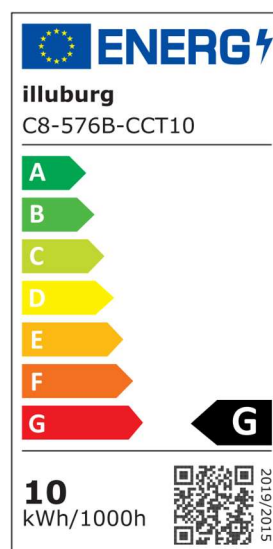
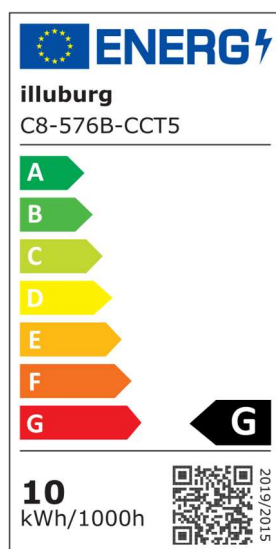
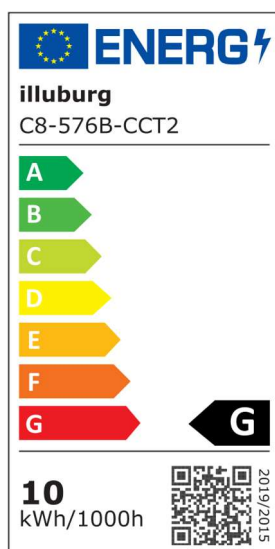


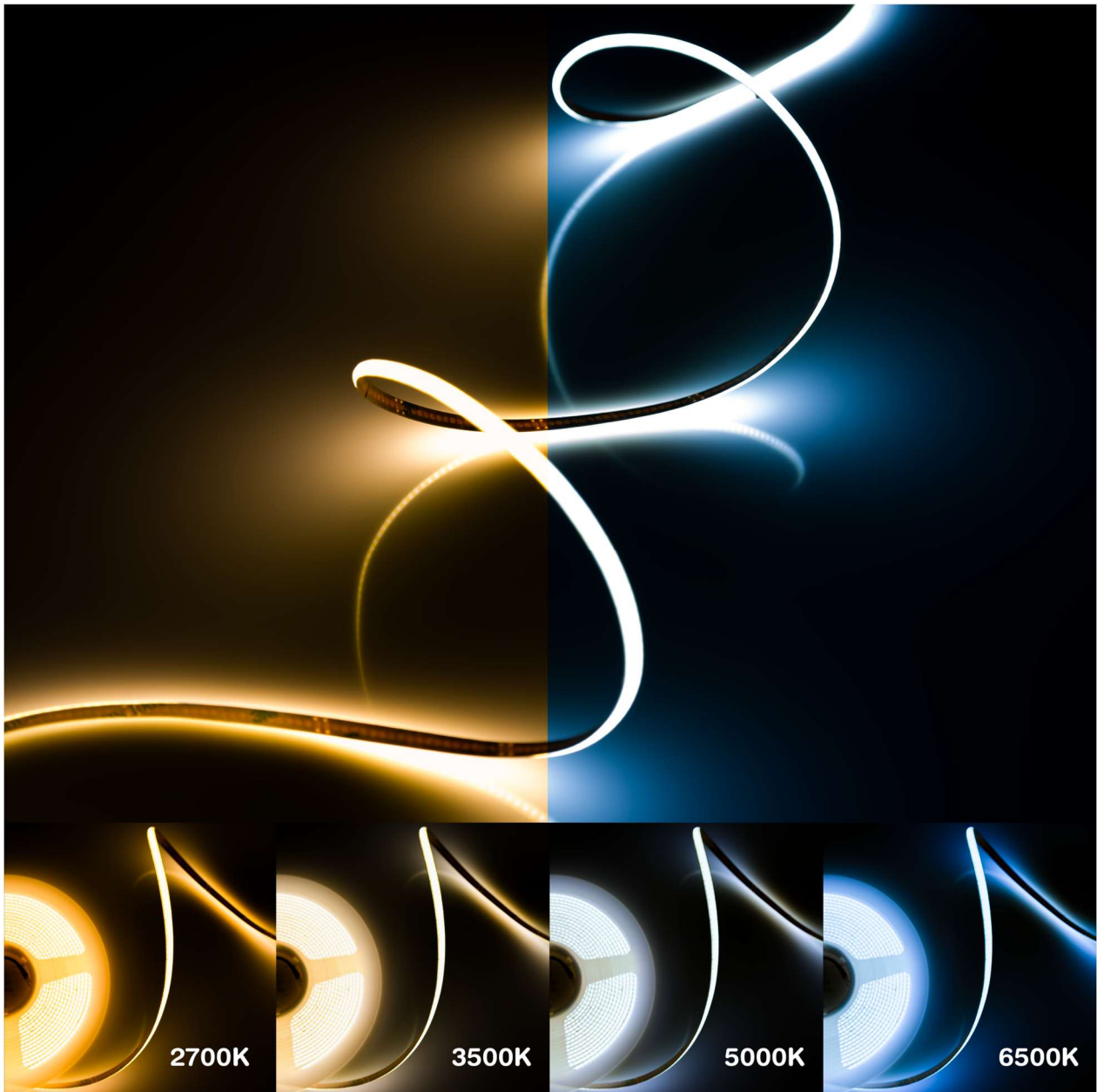
# Datasheet & Operating instructions

## Model: C8-576B-CCT

Flexible COB CCT LED Strip 2.5 m, 5 m, 10 m Roll  
576 LEDs/m, 67 lm/W, 10 W/m, 24 Vdc, 2700 – 6500 K



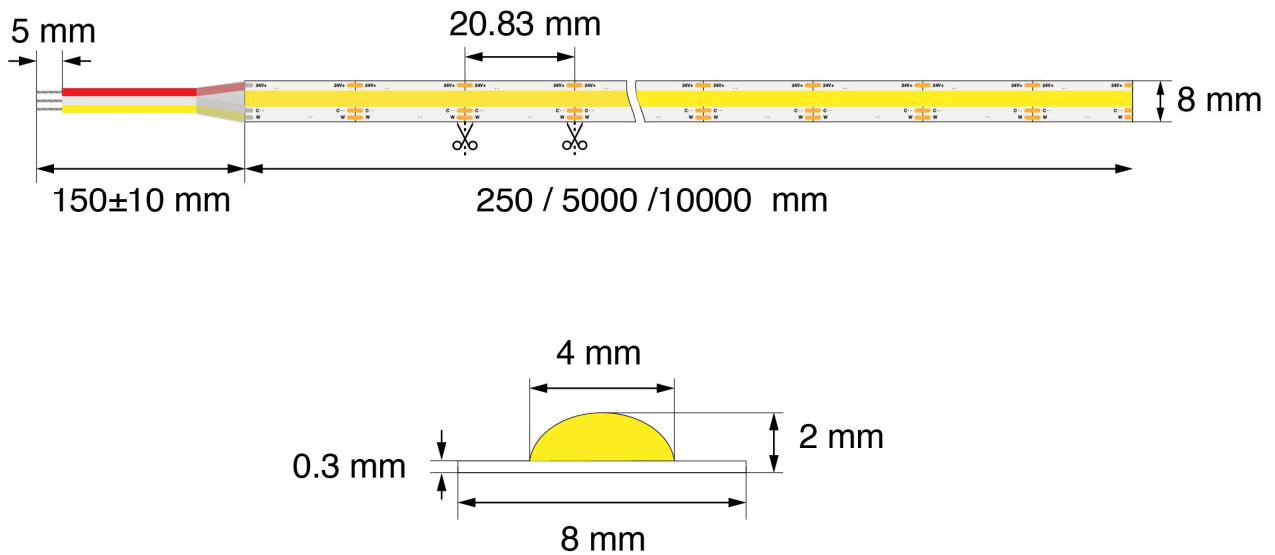
## Dimming Effect



## Technical Data

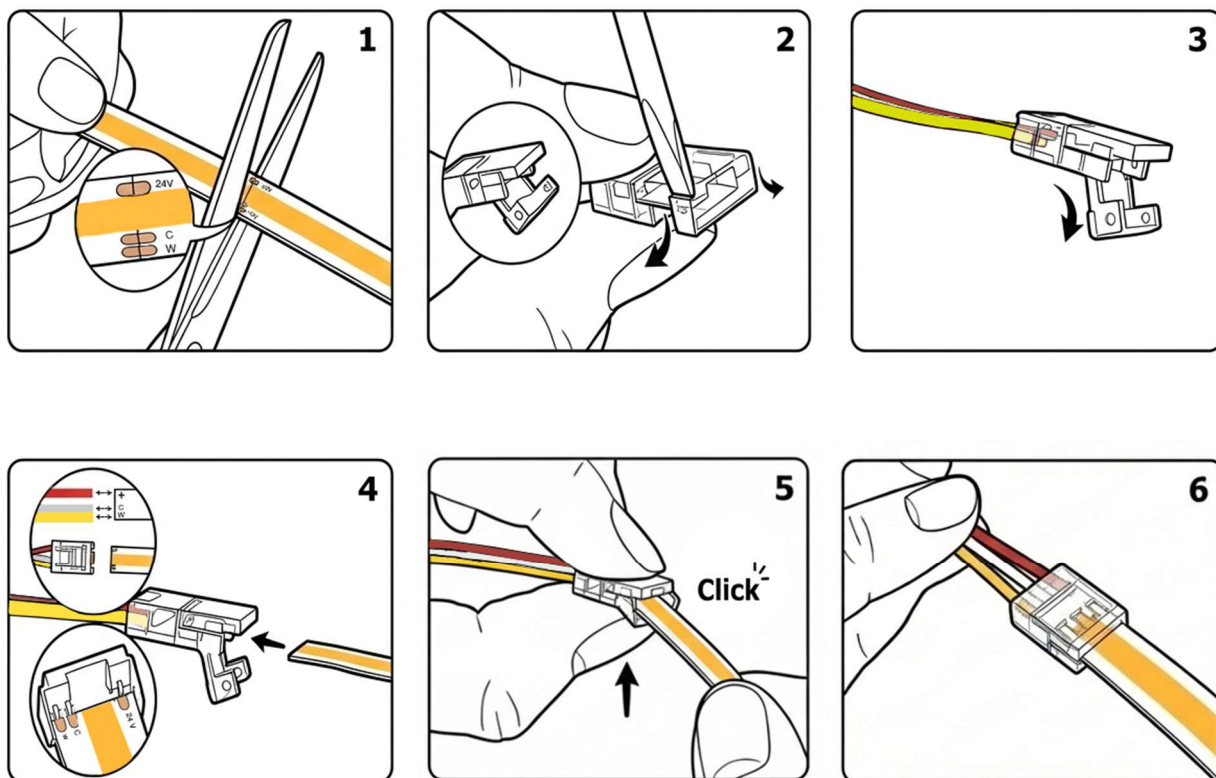
Model	C8-576B-CCT2 C8-576B-CCT5 C8-576B-CCT10	
LED type	COB	
Operating voltage	24 Vdc	
LED quantity	576 LEDs/m	C8-576B-CCT2: 1,440 LEDs C8-576B-CCT5: 2,880 LEDs C8-576B-CCT10: 5,760 LEDs
Power	10 W/m	
Efficiency	67 lm/W	
Light flux	670 lm/m	
CRI	≥ 90 Ra	
Efficiency Class	G	
Color temperature	2700 - 6500 K	
Length	C8-576B-CCT2: 2.5 m C8-576B-CCT5: 5 m C8-576B-CCT10: 10 m	
Width	8 mm	
Hight	2 mm	
Life time	50,000 h	
Working environment	-20 °C ... +45 °C	
Storage environment	-30 °C ... +80 °C	
Protection type	IP20	
CE / RoHS	yes	

## Dimension



The LED strips can be easily separated or shortened at the intersection using the cutter. There is double-sided heat-conducting adhesive tape on the back of the LED strips, which makes installation quick and easy.

## Connection Instructions



The original LED strip has a cable connection on one side. After shortening the LED strips, a new connection can be made through a connector provided for this purpose.

## **Important notice**

Download the safety instructions at [www.illuburg.de/infocenter](http://www.illuburg.de/infocenter), read them carefully and observe the listed instructions and information for proper use.

## **Disclaimer of liability**

Subject to changes and errors excepted. Make sure you are using the latest version.

## **Manufacturer Information**

If you have any further questions, please contact our technical support.

HuaTec GmbH  
Droopweg 31  
20537, Hamburg, Germany

Telefon: +49 40 236448800  
E-Mail: [info@illuburg.de](mailto:info@illuburg.de)  
Website: [www.illuburg.de](http://www.illuburg.de)

