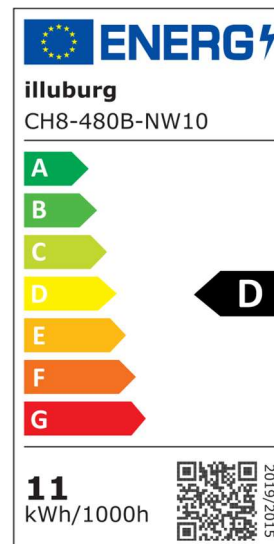
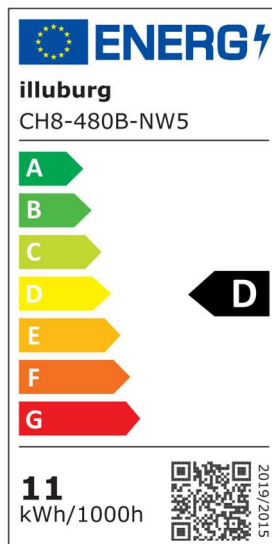
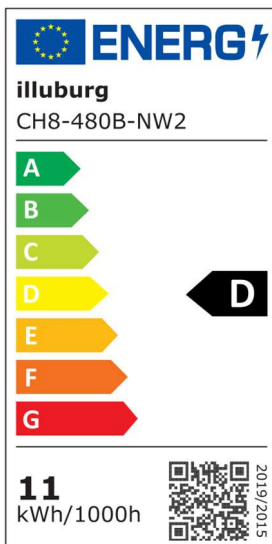


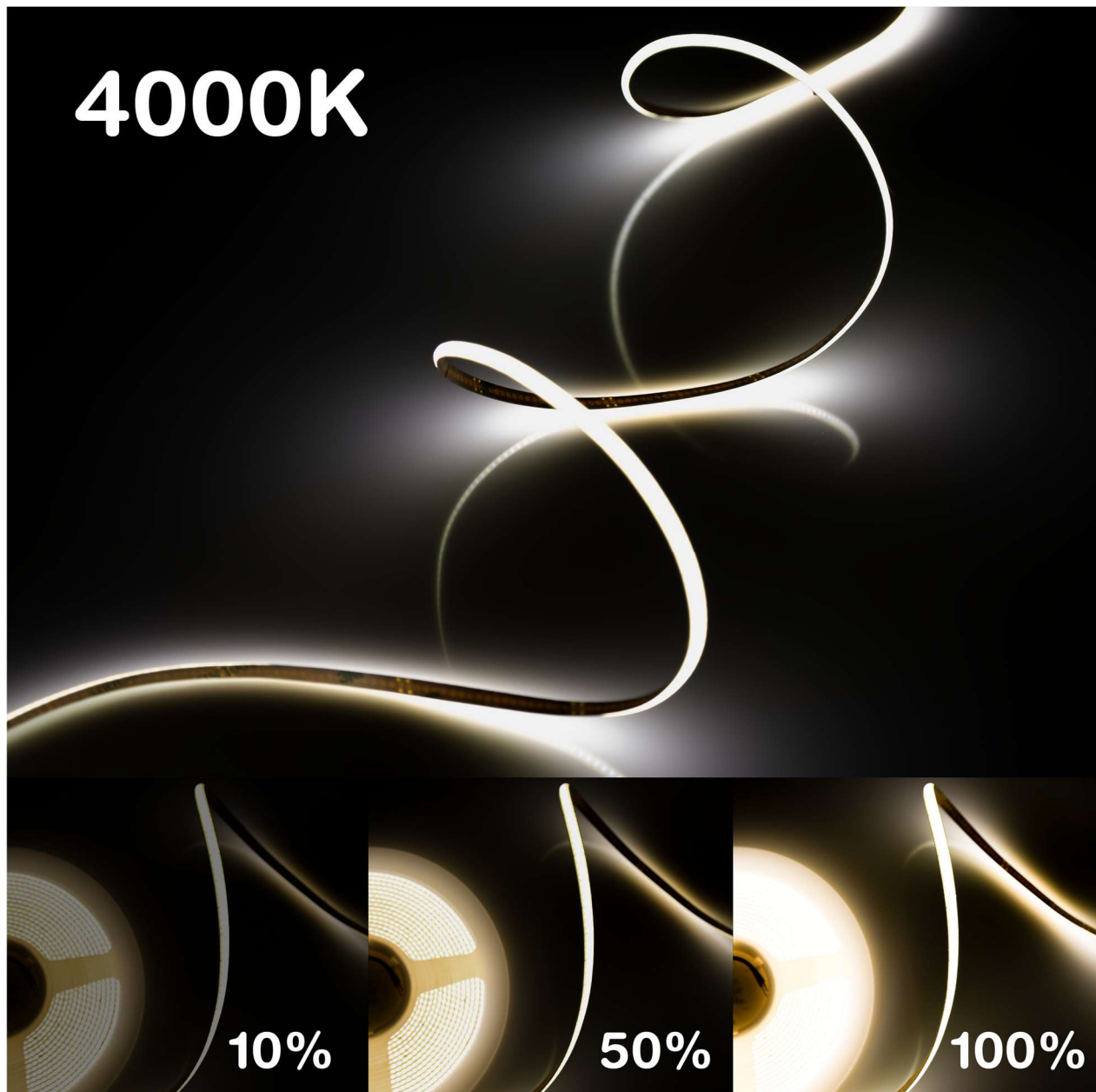
# Datasheet & Operating instructions

## Model: CH8-480B-NW

Flexible COB LED Strip 2.5 m, 5 m, 10 m Roll  
480 LEDs/m, 140 lm/W, 11 W/m, 24 Vdc, 4000 K



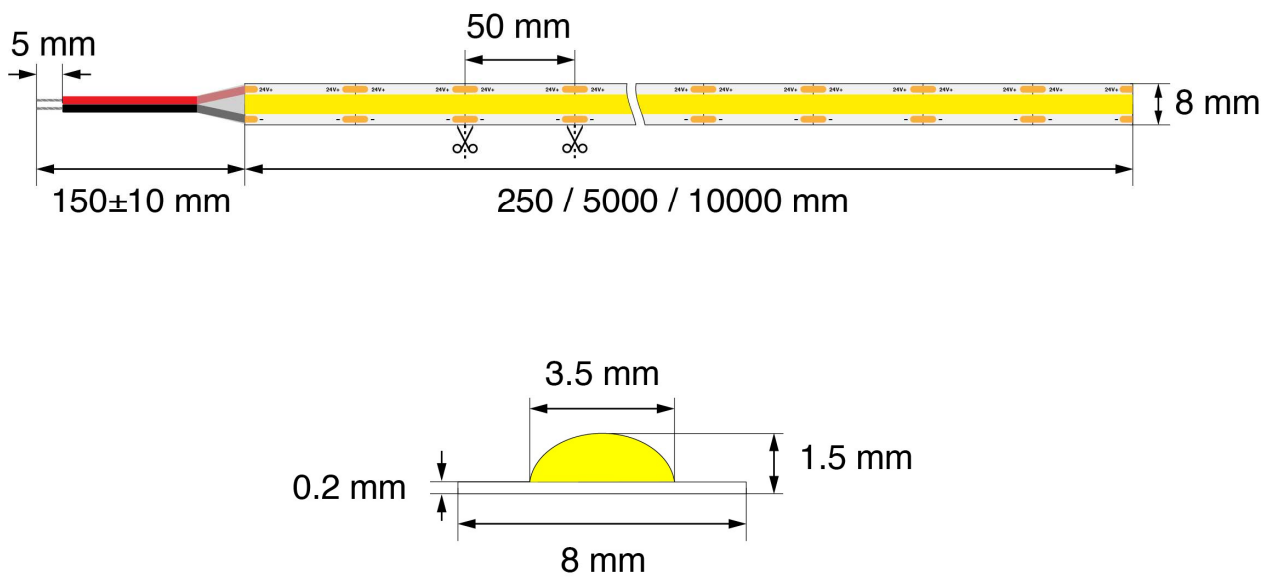
## Dimming Effect



## Technical Data

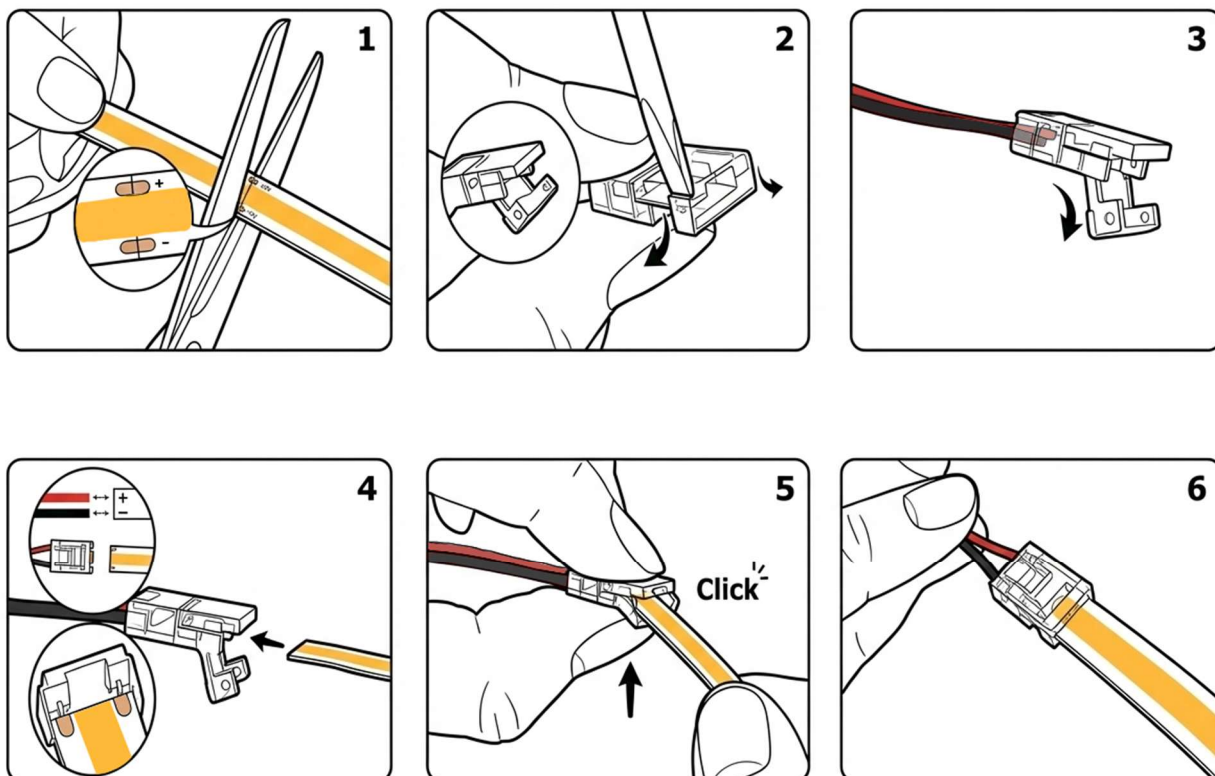
Model	CH8-480B-NW2 CH8-480B-NW5 CH8-480B-NW10	
LED type	COB	
Operating voltage	24 Vdc	
LED quantity	480 LEDs/m	CH8-480B-NW2: 1,200 LEDs CH8-480B-NW5: 2,400 LEDs CH8-480B-NW10: 4,800 LEDs
Power	11 W/m	
Efficiency	140 lm/W	
Light flux	1,540 lm/m	
Efficiency Class	D	
CRI	91 Ra	
Color temperature	4000 K	
Length	CH8-480B-NW2: 2.5 m CH8-480B-NW5: 5 m CH8-480B-NW10: 10 m	
Width	8 mm	
Hight	1.5 mm	
Life time	50,000 h	
Protection type	IP20	
CE / RoHS	yes	

## Dimension



The LED strips can be easily separated or shortened at the intersection using the cutter. There is double-sided heat-conducting adhesive tape on the back of the LED strips, which makes installation quick and easy.

## Connection Instructions



The original LED strip has a cable connection on one side. After shortening the LED strips, a new connection can be made through a connector provided for this purpose.

## Important notice

Download the safety instructions at [www.illuburg.de/infocenter](http://www.illuburg.de/infocenter), read them carefully and observe the listed instructions and information for proper use.

## Disclaimer of liability

Subject to changes and errors excepted. Make sure you are using the latest version.

## Manufacturer Information

If you have any further questions, please contact our technical support.

HuaTec GmbH  
Droopweg 31  
20537, Hamburg, Germany

Telefon: +49 40 236448800  
E-Mail: [info@illuburg.de](mailto:info@illuburg.de)  
Website: [www.illuburg.de](http://www.illuburg.de)

